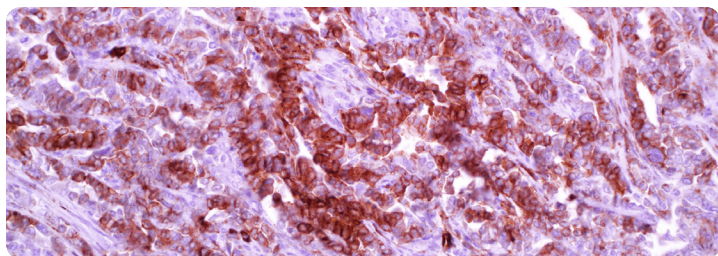


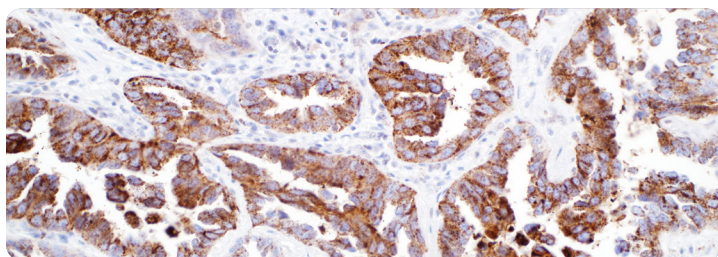
Cell Marque™ Tissue Diagnostics Pulmonary Pathology



Caveolin-1 (2297)

Cat. No. 412M-1 (A-E, G)

Caveolin-1 is useful in differentiating epithelioid mesothelioma from lung adenocarcinoma. Caveolin-1 is positive for mesothelioma and negative for lung adenocarcinoma which is why this marker should be used in lung panels in conjunction with napsin A, TTF-1, CEA, and Ber-EP4. Caveolin-1 is comparable to, and in some cases superior to, other established markers for mesothelioma such as podoplanin, calretinin, HBME-1, and WT1.



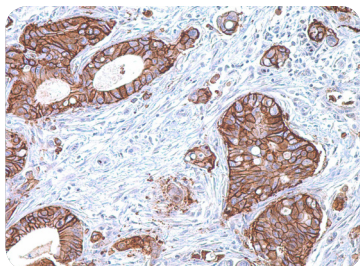
Napsin A (MRQ-60)

Cat. No. 352M-9 (A-E, G)

Napsin A is expressed in the cytoplasm and is strongly positive in up to 80% of primary lung adenocarcinomas. Squamous cell carcinomas and small cell carcinomas of the lung are characteristically negative for napsin A. Pulmonary adenocarcinoma with enteric differentiation (PAED) is a special case in that essentially none of these cases are labeled by napsin A antibody.

View more at:
cellmarque.com/specialties

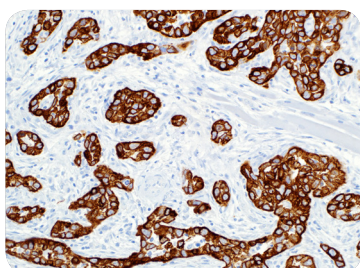




GLUT1 (polyclonal)

Cat. No. 355A-1 (A-E, G)

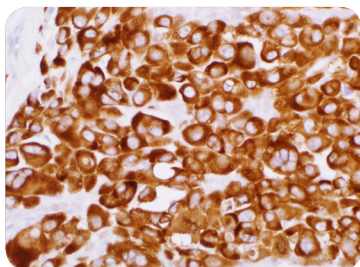
GLUT1 is detectable in many human tissues including colon, lung, stomach, esophagus, and breast. This antibody is helpful in discriminating between reactive mesothelium and malignant mesothelioma. It can be used as a reliable antibody to distinguish reactive mesothelial cells from metastatic adenocarcinoma particularly body cavity effusions, ovarian, and pulmonary adenocarcinoma.



Cytokeratin 5 + Cytokeratin 14 (EP1601Y + LL002)

Cat. No. 905H-0 (D-E)

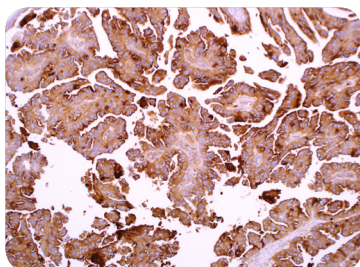
Cytokeratin 5 is useful in the differential diagnosis of metastatic carcinoma of the pleura versus epithelial mesothelioma. Cytokeratin 14 is useful in the differentiation of squamous cell carcinoma from other epithelial tumors. With the combination of Cytokeratin 5 with Cytokeratin 14, this antibody has been found to be useful in the identification of basaloid phenotype of breast carcinoma, a tumor with poor prognosis.



IMP3 (EP286)

Cat. No. 433R-1 (A-E, G)

IMP3 is a useful marker in identifying malignancies in pancreatic ductal adenocarcinoma to distinguish them from benign pancreatic lesions, such as chronic pancreatitis. IMP3 is also known to be strongly expressed Reed-Sternberg (RS) cells and mononuclear RS for classic Hodgkin lymphoma (cHL). The advantage of this marker for cHL is that it does not stain immunoblasts or background neutrophils, eosinophils and macrophages and is more sensitive than the more traditional markers CD30 and CD15.



Mesothelin (EP140)

Cat. No. 439R-1 (A-E, G)

Mesothelin is a mesothelioma marker that is utilized in lung differentials. Mesothelin is important for distinguishing mesothelioma from lung adenocarcinoma. Due to mesothelin's high sensitivity, if it stains negatively, then it is unlikely that the tissue is a mesothelioma. Mesothelin should be used in a panel with calretinin, cytokeratin 5 & 6, and Ep-CAM (Ber-EP4).

Lit. No. CM-18-03-0029 Ver. 1.0 03/2018

Legend:

A: 0.1 mL concentrate
B: 0.5 mL concentrate
C: 1 mL concentrate

D: 1 mL predilute
E: 7 mL predilute
F: 25 mL predilute

G: 5 Positive Control Slides



View more at:
cellmarque.com/specialties

To place an order or receive technical assistance in the U.S. and Canada, call toll-free 1-800-665-7284
 For other countries across Europe and the world, please call: +1 916-746-8900
 For Technical Service, please email: service@cellmarque.com

MilliporeSigma
 Cell Marque[™]
 6600 Sierra College Blvd.
 Rocklin, California 95677

cellmarque.com



Copyright © 2018 Merck KGaA, Darmstadt, Germany and/or its affiliates. All Rights Reserved. MilliporeSigma, the vibrant M, Sigma-Aldrich and Cell Marque are trademarks of Merck KGaA, Darmstadt, Germany or its affiliates. All other trademarks are the property of their respective owners.